

Israel Senior 2017 Tropy BeerSheba



Oil Pattern Distance: 40 Feet	Reverse Brush Drop: 40 Feet	Oil Per Board: 40 uL
Forward Oil Total: 17.48 mL	Reverse Oil Total: 9.16 mL	Volume Oil Total: 26.64 mL
Forward Boards Crossed: 437 Boards	Reverse Boards Crossed: 229 Boards	Total Boards Crossed: 666 Boards

	Start	Stop	Loads	Speed	Crossed	Start	End	Feet	T.Oil
1	2L	2R	5	10	185	0.0	5.6	5.6	7400
2	6L	6R	1	14	29	5.6	7.5	1.9	1160
3	7L	7R	2	14	54	7.5	11.4	3.9	2160
4	8L	8R	1	14	25	11.4	13.3	1.9	1000
5	10L	10R	2	14	42	13.3	17.2	3.9	1680
6	11L	11R	2	18	38	17.2	22.3	5.1	1520
7	12L	12R	2	22	34	22.3	28.5	6.2	1360
8	13L	13R	2	22	30	28.5	34.7	6.2	1200
9	2L	2R	0	22	0	34.7	40.0	5.3	0

Conditioner:
Type In or Select One

TransferType:
Type In or Select One

Forward



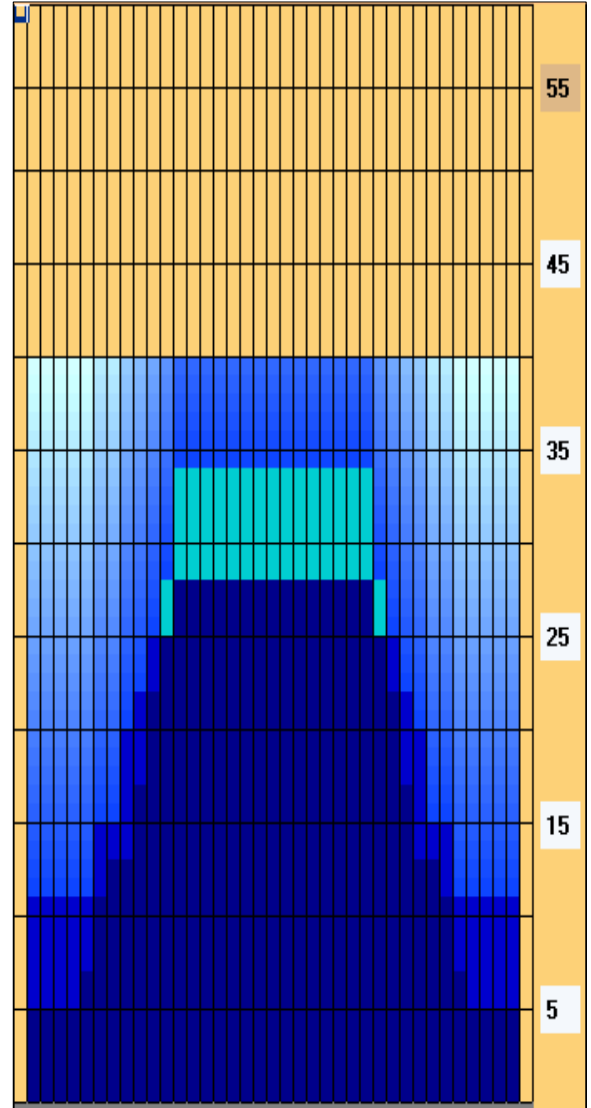
Reverse



Combined



Buff



	Start	Stop	Loads	Speed	Crossed	Start	End	Feet	T.Oil
1	2L	2R	0	26	0	40.0	28.0	-12.0	0
2	13L	13R	1	22	15	28.0	24.9	-3.1	600
3	11L	11R	1	18	19	24.9	22.4	-2.5	760
4	10L	10R	1	18	21	22.4	19.9	-2.5	840
5	9L	9R	2	18	46	19.9	14.8	-5.1	1840
6	7L	7R	2	14	54	14.8	10.9	-3.9	2160
7	2L	2R	2	14	74	10.9	7.0	-3.9	2960
8	2L	2R	0	10	0	7.0	0.0	-7.0	0

Item	3L-7L:18L-18R	8L-12L:18L-18R	13L-17L:18L-18R	18L-18R:17R-13R	18L-18R:12R-8R	18L-18R:7R-3R
Description	Outside Track:Middle	Middle Track:Middle	Inside Track:Middle	Middle: Inside Track	Middle:Middle Track	Middle:Outside Track
Track Zone Ratio	3.17	1.44	1	1	1.44	3.17

