

# B- Championships-Petach Tikva 2014



Oil Pattern Distance:	39 Feet	Reverse Brush Drop:	39 Feet	Oil Per Board:	40 uL
Forward Oil Total:	14.2 mL	Reverse Oil Total:	8.76 mL	Volume Oil Total:	22.96 mL
Forward Boards Crossed:	355 Boards	Reverse Boards Crossed:	219 Boards	Total Boards Crossed:	574 Boards

	Start	Stop	Loads	Speed	Crossed	Start	End	Feet	T.Oil
1	2L	2R	3	10	111	0.0	2.8	2.8	4440
2	6L	6R	2	14	58	2.8	6.7	3.9	2320
3	8L	8R	2	14	50	6.7	10.6	3.9	2000
4	10L	10R	3	14	63	10.6	16.5	5.9	2520
5	12L	12R	2	18	34	16.5	21.6	5.1	1360
6	14L	14R	3	22	39	21.6	30.9	9.3	1560
7	2L	2R	0	22	0	30.9	32.0	1.1	0
8	2L	2R	0	30	0	32.0	39.0	7.0	0

Conditioner:  
Type In or Select  
One

TransferType:  
Type In or Select  
One

Forward

Reverse

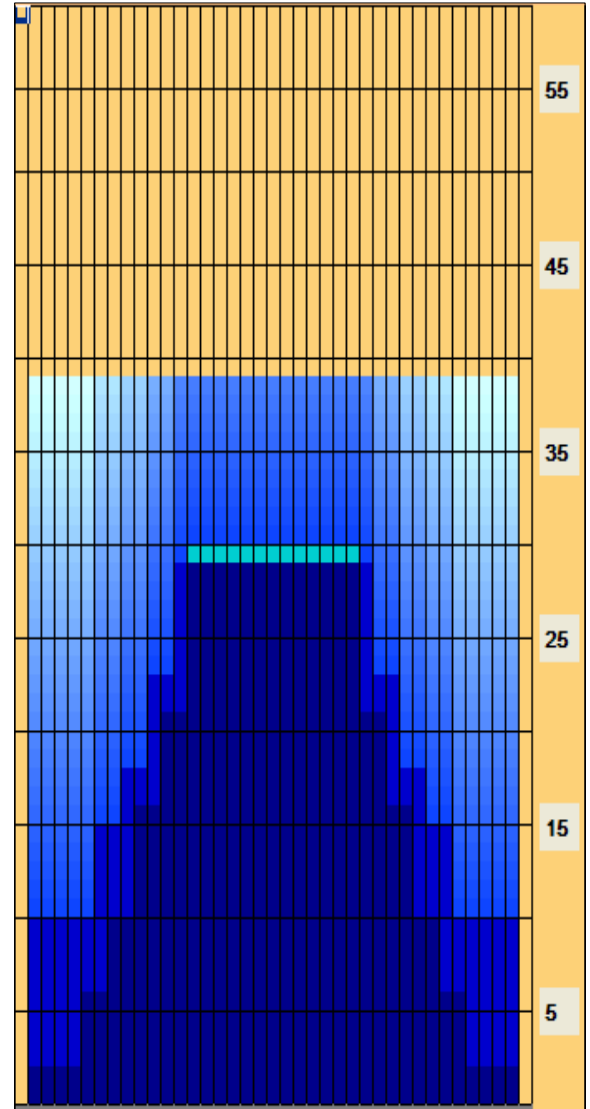
Combined

Buff

Forward Reverse More

	Start	Stop	Loads	Speed	Crossed	Start	End	Feet	T.Oil
1	2L	2R	0	30	0	39.0	29.0	-10.0	0
2	13L	13R	2	22	30	29.0	22.8	-6.2	1200
3	11L	11R	2	18	38	22.8	17.7	-5.1	1520
4	9L	9R	1	18	23	17.7	15.2	-2.5	920
5	7L	7R	2	18	54	15.2	10.1	-5.1	2160
6	2L	2R	2	18	74	10.1	5.0	-5.1	2960
7	2L	2R	0	14	0	5.0	0.0	-5.0	0

Forward Reverse More



Item	3L-7L:18L-18R	8L-12L:18L-18R	13L-17L:18L-18R	18L-18R:17R-13R	18L-18R:12R-8R	18L-18R:7R-3R
Description	Outside Track:Middle	Middle Track:Middle	Inside Track:Middle	Middle:Inside Track	Middle:Middle Track	Middle:Outside Track
Track Zone Ratio	3.87	1.62	1.03	1.03	1.62	3.87

