



# Bola-Team Israel-Long

Oil Per Board: 40 uL      Oil Pattern Distance: 44 Feet      Volume Oil Total: 24.24 mL      Total Boards Crossed: 606 Boards

Forward Oil Total: 15.8 mL      Reverse Oil Total: 8.44 mL  
 Forward Boards Crossed: 395 Boards      Reverse Boards Crossed: 211 Boards

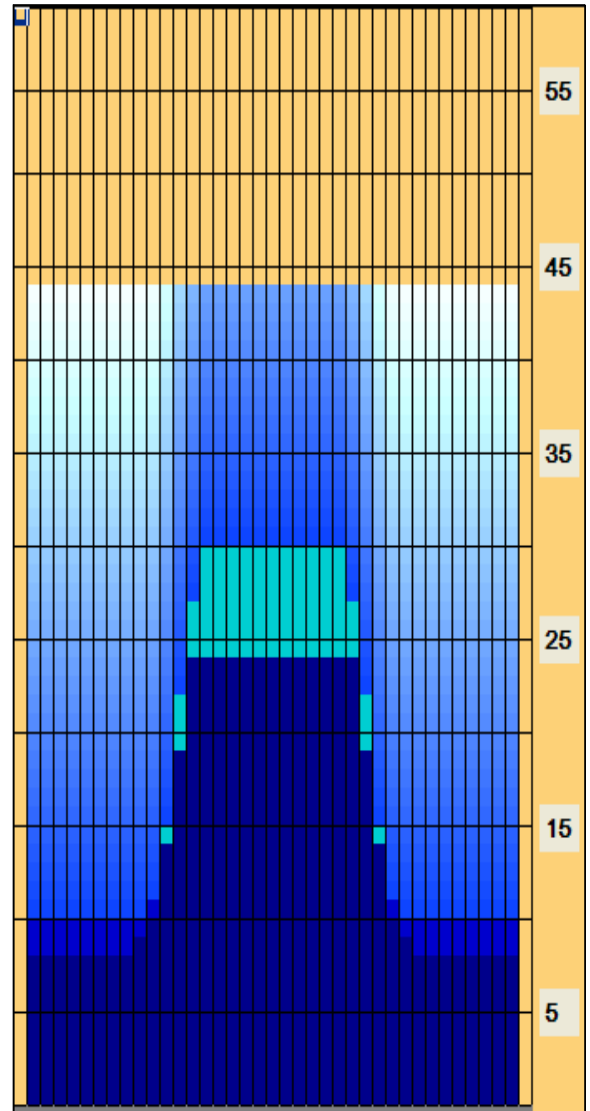
Kegel Kode: 4545 | Pattern designed for use in Kegel TRANSFER ROLLER/WIPER BAR machines. | As with most long oil patterns, the optimum line is usually one that is closer to the pocket or more towards the inside portion of the lane. The greatest slope of conditioner on this pattern is from the 11th board to the 15th board so players should target along this route. Outside of the 11th board, the pattern is flat so

Conditioner:  
Type In or Select One

TransferType:  
Type In or Select One

	Start	Stop	Loads	Speed	Crossed	Start	End	Feet	T.Oil
1	2L	2R	6	10	222	0.0	8.0	8.0	8880
2	10L	10R	1	14	21	8.0	9.0	1.0	840
3	11L	11R	1	14	19	9.0	10.0	1.0	760
4	12L	12R	3	14	51	10.0	15.0	5.0	2040
5	13L	13R	3	18	45	15.0	22.0	7.0	1800
6	14L	14R	2	18	26	22.0	27.0	5.0	1040
7	15L	15R	1	22	11	27.0	30.0	3.0	440
8	2L	2R	0	22	0	30.0	38.0	8.0	0
9	2L	2R	0	26	0	38.0	44.0	6.0	0

- Forward
- Reverse
- Combined
- Buff



	Start	Stop	Loads	Speed	Crossed	Start	End	Feet	T.Oil
1	2L	2R	0	26	0	44.0	24.0	-20.0	0
2	14L	14R	3	14	39	24.0	19.0	-5.0	1560
3	13L	13R	3	14	45	19.0	14.0	-5.0	1800
4	12L	12R	2	14	34	14.0	11.0	-3.0	1360
5	11L	11R	1	14	19	11.0	10.0	-1.0	760
6	2L	2R	2	14	74	10.0	7.0	-3.0	2960
7	2L	2R	0	14	0	7.0	0.0	-7.0	0

Arrow Zone Ratios

Item	2-5L:16L-20	6-10L:16:-20	11-15L:16L-20	16L-20:20-16R	16L-20:20-16R	20-16R:15-11R	20-16R:10-6R	20-16R:5-2R
ul Arrow	320	328	832	1120	1120	832	328	320
Zone Ratio	3.5	3.41	1.35	1	1	1.35	3.41	3.5

Track Zone Ratios

Item	3L-7L:18L-18R	8L-12L:18L-18R	13L-17L:18L-18R	18L-18R:17R-13R	18L-18R:12R-8R	18L-18R:7R-3R
Description	Outside Track:Middle	Middle Track:Middle	Inside Track:Middle	Middle: Inside Track	Middle:Middle Track	Middle:Outside Track
Track Zone Ratio	3.5	2.69	1.05	1.05	2.69	3.5

